



The Cross-ministerial Strategic Innovation Promotion Program (SiP)

Development of Smart Mobility Platform

【Subtheme I】Redesigning Mobility Services

Research and Development on Local Transportation Community Formulation and Human Resource Development Program with Narrative Approaches

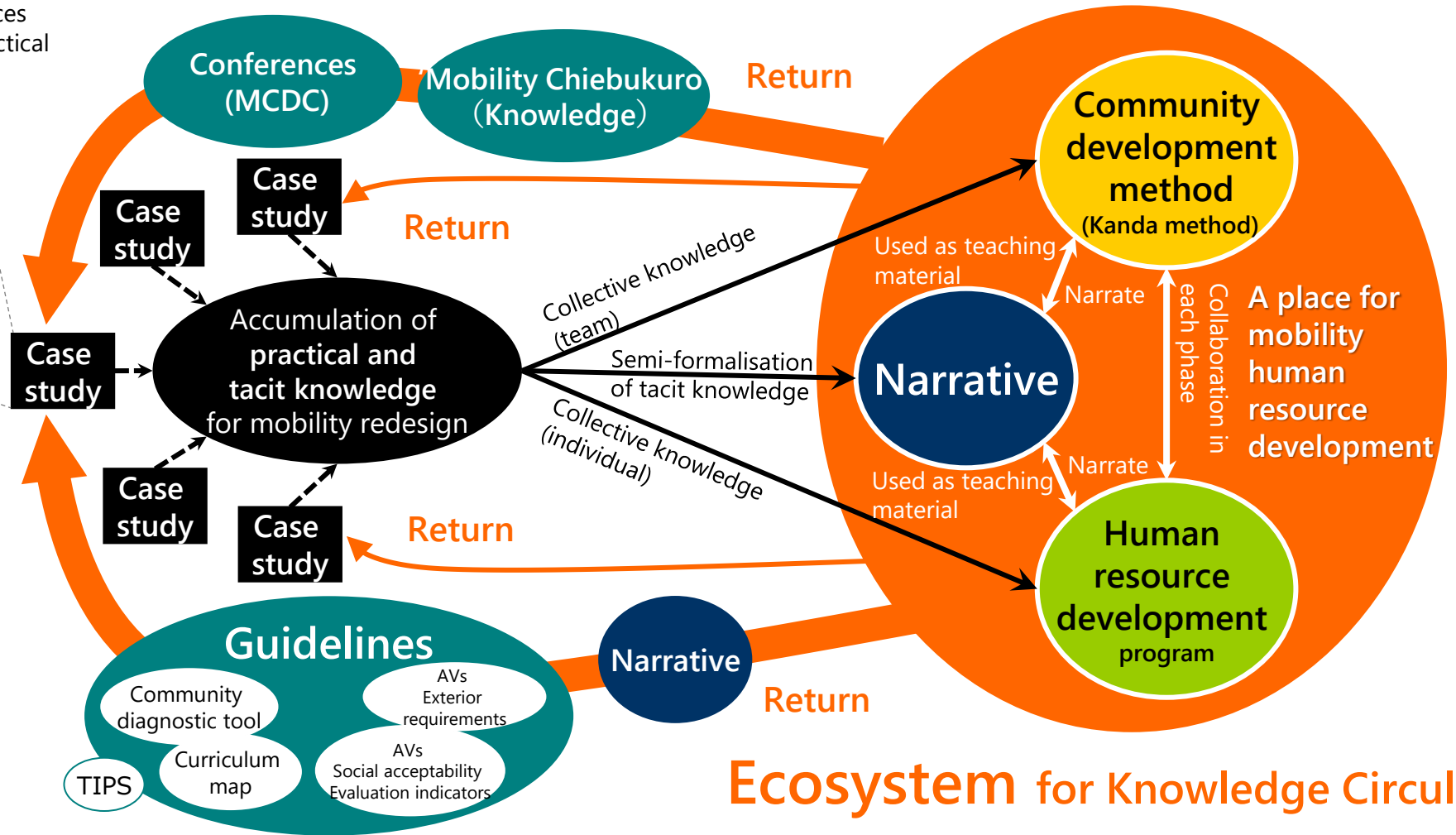
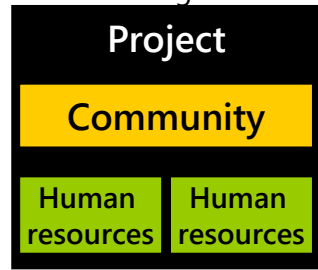
March 2025

Tsukuba University Consortium

University of Tsukuba
National Institute of Technology, Kure College
Oriental Consultants Co., LTD.
Hokkaido Development Engineering Center

Framework

Communities and human resources exist in individual cases, with practical and tacit knowledge.



Ecosystem for Knowledge Circulation

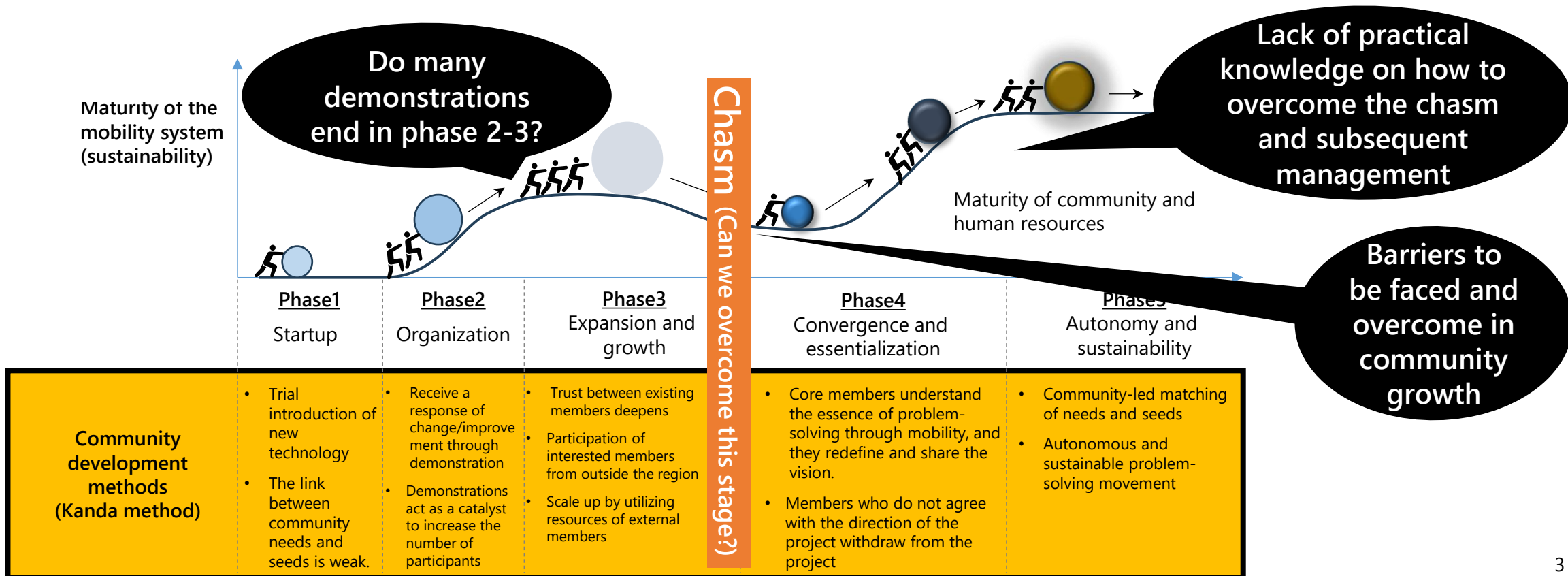
In the future, in collaboration with JICA and other organizations, we aim to share and co-create this 'ecosystem' with communities in Southeast Asia, Latin America and other regions.

Progress of research and development / Kanda method

Kanda method: building a hypothesis

● Hypothesis of the growth process of mobility projects

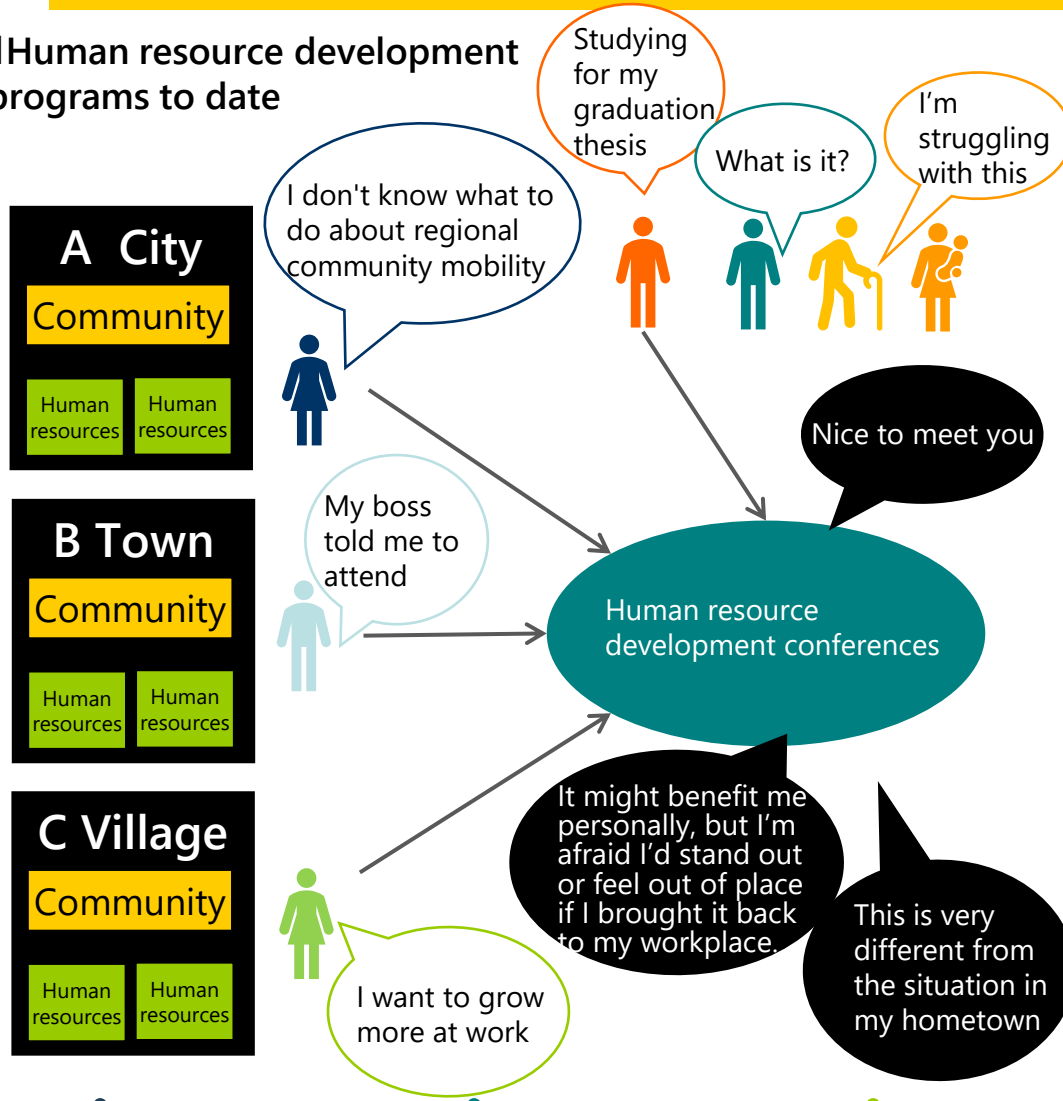
- The social implementation of new mobility technologies (seeds) that lead to solutions to local problems (needs) requires management and direction in accordance with the growth process of the community.
 - This process will be assessed by reviewing the practices of past mobility projects and the projects we are currently involved in as a player, and based on this assessment, a growth hypothesis will be developed in the SiP project.
- Due to the large number of stakeholders, there are times when the approach becomes uncertain (a "chasm"), causing many projects to end without overcoming it.
- Therefore, "signposts" are important for social implementation, and this growth process provides them throughout the process.



Progress of research and development / Conferences

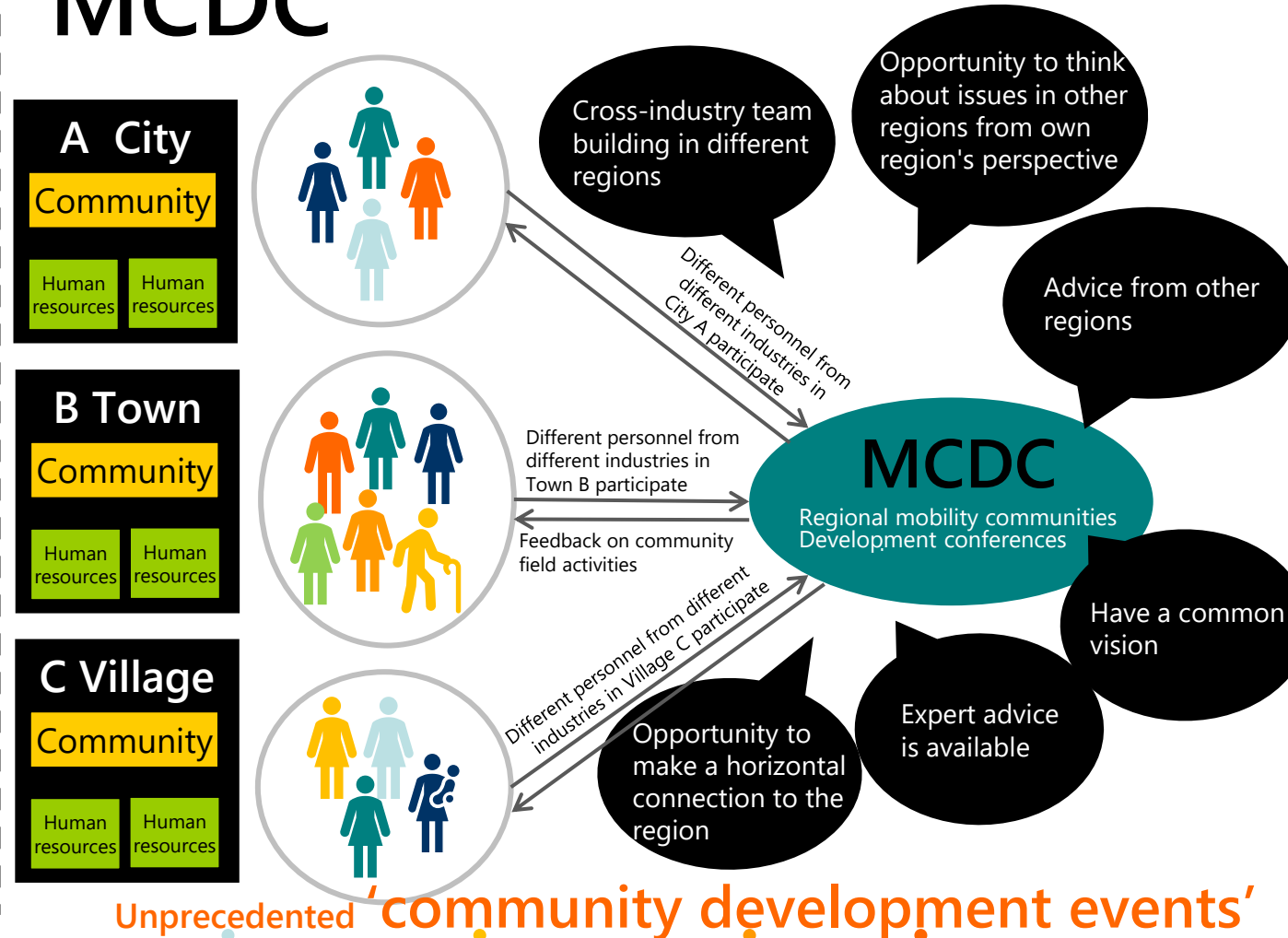
National Conference: MCDC pilot

Human resource development programs to date



MCDC

Mobility Community Development Conference



- 例: Transportation municipal officials Tourism-related municipal officials Welfare and health municipal officials Transportation business operator Local shopkeepers residents student

Progress of research and development / Curriculum map

Human Resource Development Curriculum: Development of a Hypothetical Curriculum Nap

- A hypothetical curriculum map has been constructed, effectively combining existing human resource development programs, with policy makers (local authorities), policy planning supporters (consultants), and transport operators as the primary users of the R&D results.

Prior users of R&D results

Policy makers (basic local authorities)

Policy development supporters (consultants)

Transport operators

Increase and maintain motivation

Revitalization school [basic seminar] (May)

Discussions with everyone Team building

ECOMO Foundation [EST creation seminar] (May, November)

JCOMM (August)

Thinking Together About the Essentials of Daily Life National Forum (October)

IBS [MM technical training] (October)

Q Support Net (irregular)

COMO × GOMO (irregular)

Knowledge acquisition

Japan Construction Training Centre (April, November)

College of the Ministry of Land, Infrastructure, Transport and Tourism(August, etc.)

Transport Authority Seminars (Held Once or Twice a Year)

JCoMaaS (throughout the year)

Revitalization school [evening seminars] (throughout the year)

Revitalization School [Technical Seminars] (September)

Deepening Insight Through Thoughtful Dialogue

ECOMO Foundation [training workshop for regional transport environment measures promoters] (September)

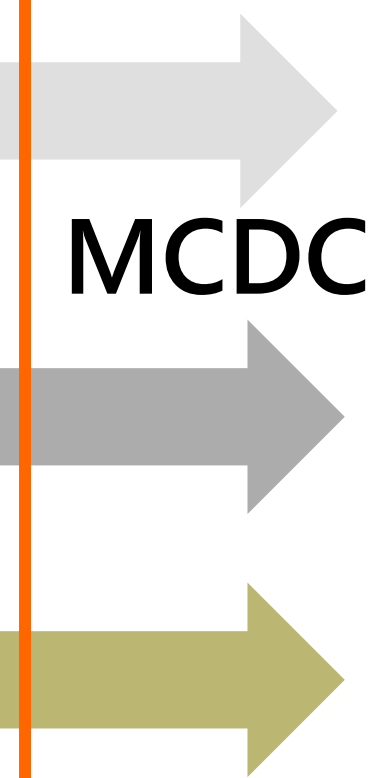
Revitalization school [advanced course] (August -December)

Regional public transport coordinator/producer training project (October -January)

Public transport marketing study group (irregular)

Discussions with everyone Team building

MCDC



Progress of research and development / knowledge feedback system

Mobility Chiebukuro: Website Launch



① Explore, Learn, and Enjoy

- World Mobility News [in operation].
- Total Mobilization Tips (overseas version) [in operation]
 - *In collaboration with IBS
- Total Mobilization Tips (domestic version) [Implemented in FYR7]
 - *In collaboration with IBS
- Books and papers that serve as references for introducing and improving mobility and mobility management (MM).

② Experience and Create New Narratives

- narratives about a person [In operation].
- narratives about local mobility [in operation].

③ Apply Tools in Practice

- Mobility Management tool [in operation].
- Community Assessment Tool [Implemented in FYR7].

④ Learn, Share, and Connect

- Seminar and event information [In operation].
- Projects that can be used [Implemented in FYR7].